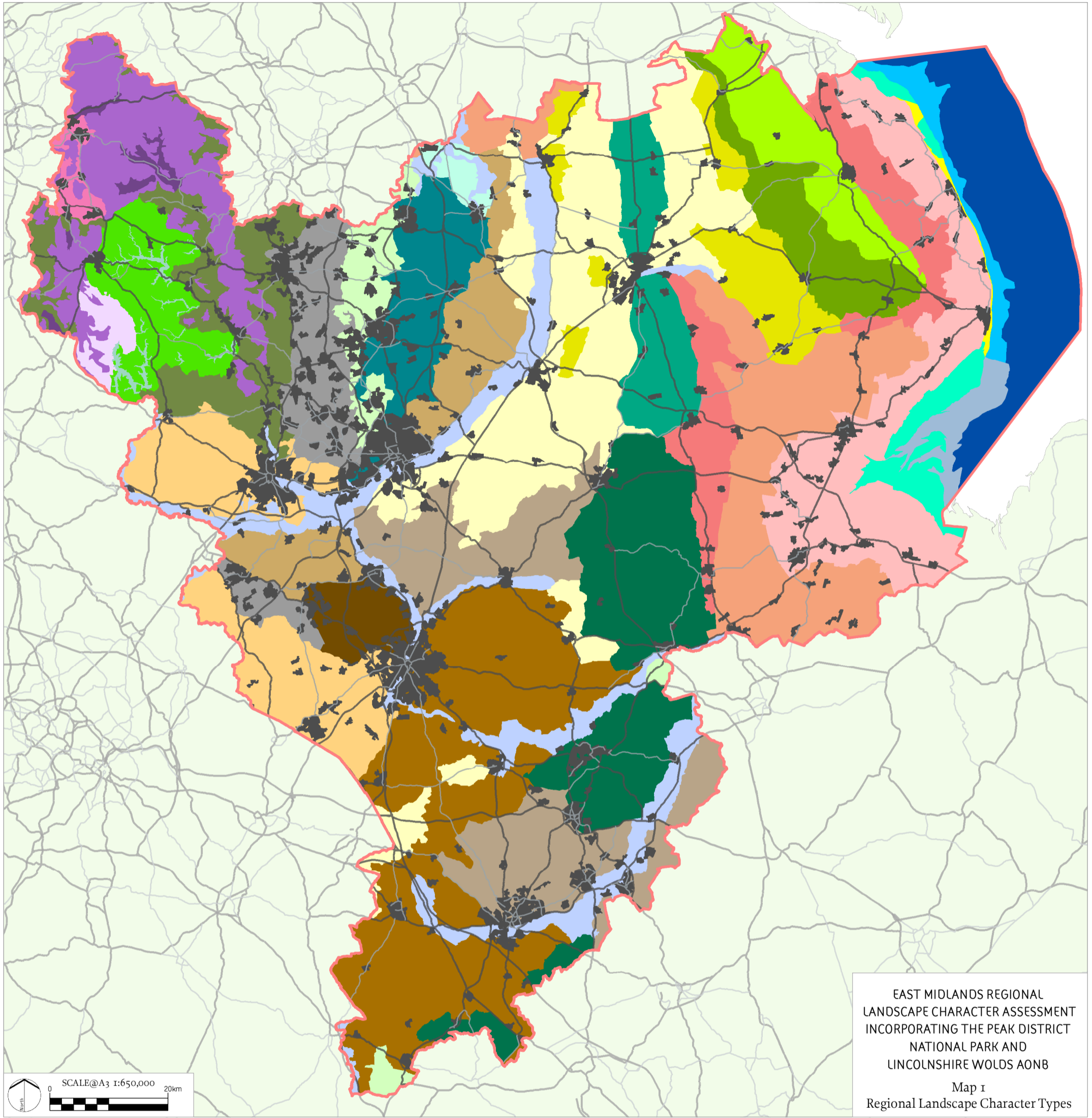


No dimensions are to be scaled from this drawing. All dimensions are to be checked on site. Area measurements for indicative purposes only.



EAST MIDLANDS REGIONAL
LANDSCAPE CHARACTER ASSESSMENT
INCORPORATING THE PEAK DISTRICT
NATIONAL PARK AND
LINCOLNSHIRE WOLDS AONB
Map 1
Regional Landscape Character Types



Legend		Group 3: River Valley Floodplains		Group 6: Limestone Farmlands		Group 10: Woods and Forests	
	Study Area Boundary		3a: Floodplain Valleys		6a: Limestone Scarps and Dipslopes		10a: Forest Hills and Ridges
	Built Up Area		3b: Sandland Farmlands		6b: Upland Limestone Pastures		10b: Sandstone Forests and Heaths
Group 1: Coast and Sea		Group 4: Lowland Vales					
	1a: Coastal Saltmarshes and Mudflats		4a: Unwooded Vales				
	1b: Coastal Dunes, Beach and Intertidal Sand Flats		4b: Wooded Vales	Group 7: Chalk Wolds		Group 11: Gritstone Moors and Fringes	
	1c: Shallow Coastal Waters	Group 5: Village Farmlands			7a: Chalk Wolds		11a: Open Moors and Inbye Land
	1d: Shallow Inlet Bay		5a: Village Farmlands		7b: Wolds Scarps, Ridges and Valleys		11b: Moorland Valleys
	1e: Offshore Industries, Fisheries and Navigations		5b: Wooded Village Farmlands	Group 8: Clay Wolds			11c: Settled Valleys and Enclosed Gritstone Uplands
Group 2: Fenland and Fenland Margins			5c: Undulating Mixed Farmlands				11d: Upland Pastoral Hills and Valleys
	2a: Settled Fens and Marshes	Group 9: Coalfields					
	2b: Planned and Drained Fens and Carrlands			9a: Settled Coalfield Farmlands			
	2c: Fen and Marsh Margin Farmlands						

X:\085757_East Midlands Reg\GIS\Projects\Update_March10\2757_Map1.mxd