



Lundy Marine Nature Reserve

Nicola Saunders
Lundy Warden









Key Points

Lundy Management Works

- Through Partnership
- Communications
 - Liaising with user groups
 - Integrated management structure
- Research - Increased knowledge & understanding
- Raising awareness
 - Interpretation & education
 - Media

How is Lundy Managed?



THE NATIONAL TRUST

The Landmark Trust

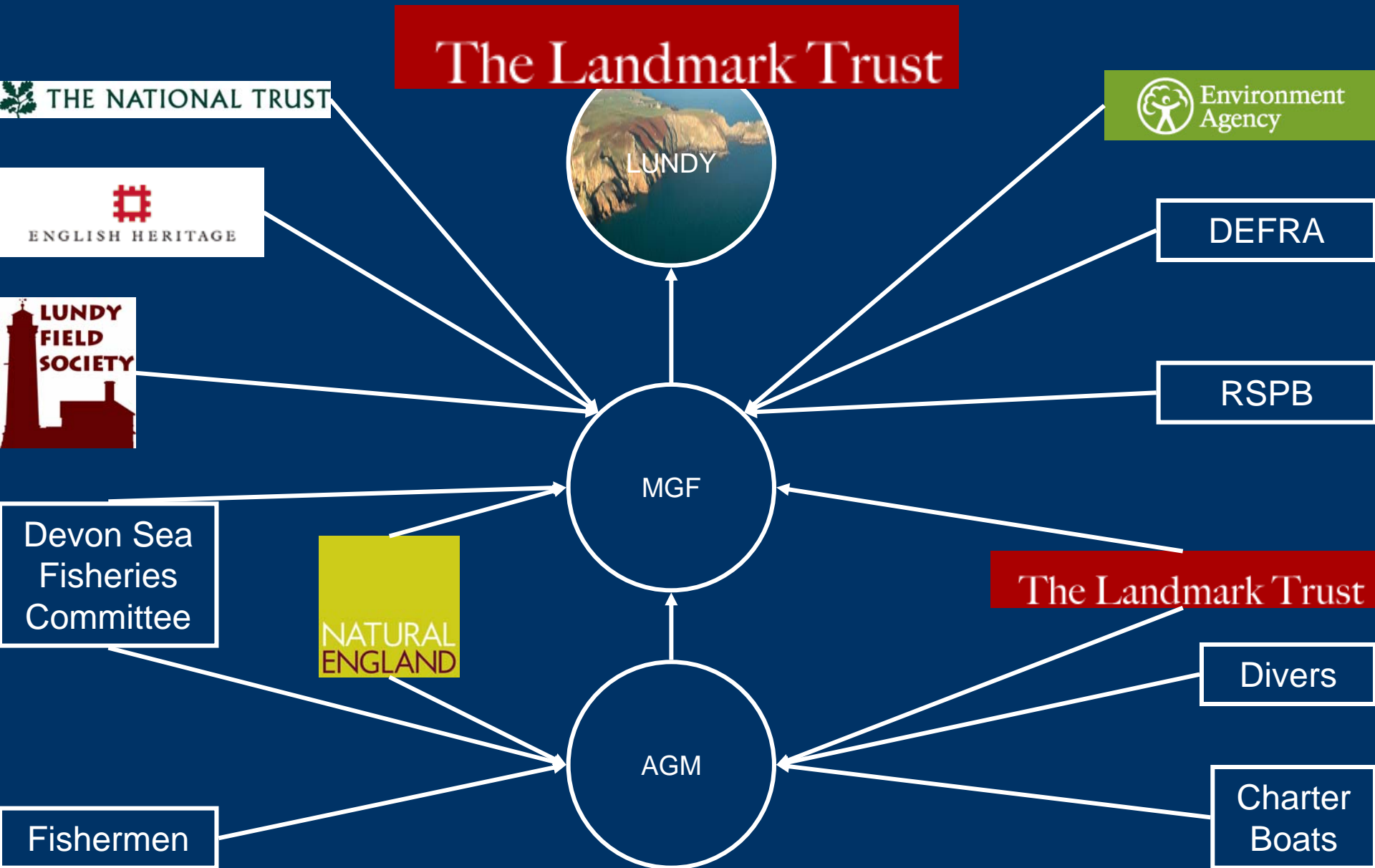
NATURAL
ENGLAND

Liaising with Stakeholders

- Divers
- Anglers
- Charter boats
- Yachts
- Kayakers
- Fishermen
- Visitors – Day trippers & Staying Guests



Integrated Management – behind the scenes



Survey & Monitoring

- MNR Patrols
- Seabird Surveys
- Sargassum Clearance
- Cup coral surveys
- Seal monitoring



Survey

- Annual NTZ Surveys CMER – Miles Hoskin
- 2007 – Cup Coral Survey – Robert Irving
- 2007 – Intertidal Survey – Keith Hiscock
- 2008 – Grey Seal Survey
- 2008 – Manx Shearwater – RSBP



Lundy

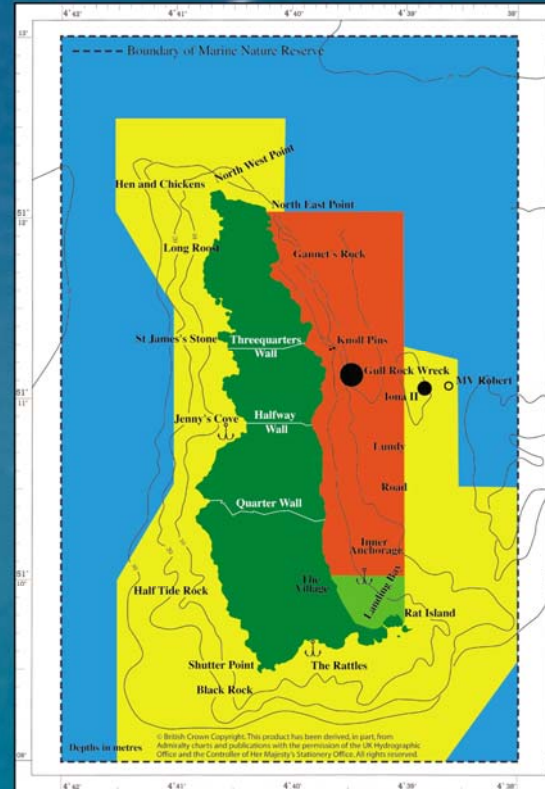
MPA

- MNR
- NTZ
- SAC

SSSI

Lundy Marine Nature Reserve Zoning Scheme

Lundy MNR is used by a wide variety of people. A zoning scheme has been developed, much of which is backed up by law; to enable everyone to enjoy the reserve whilst protecting this special place.



KEY

- | | |
|--|--|
|  Anchor symbol = Recommended anchorages.
In the Landing Bay please allow clear access for the ferry |  Green = Recreational Zone –
Restrictions as for Refuge zone but be aware of other water users |
|  Red = No Take Zone –
No fishing or collection of sea life of any kind*. No anchors or diver shotlines within 100m of the Knoll Pins |  Black = Archaeological Protection Zone –
No diving or fishing allowed (without a licence ^a) |
|  Yellow = Refuge Zone –
No fishing except potting or angling |  Blue = General Use Zone –
No spearfishing. All other activities allowed |

^a Devon Sea Fisheries Committee byelaw.

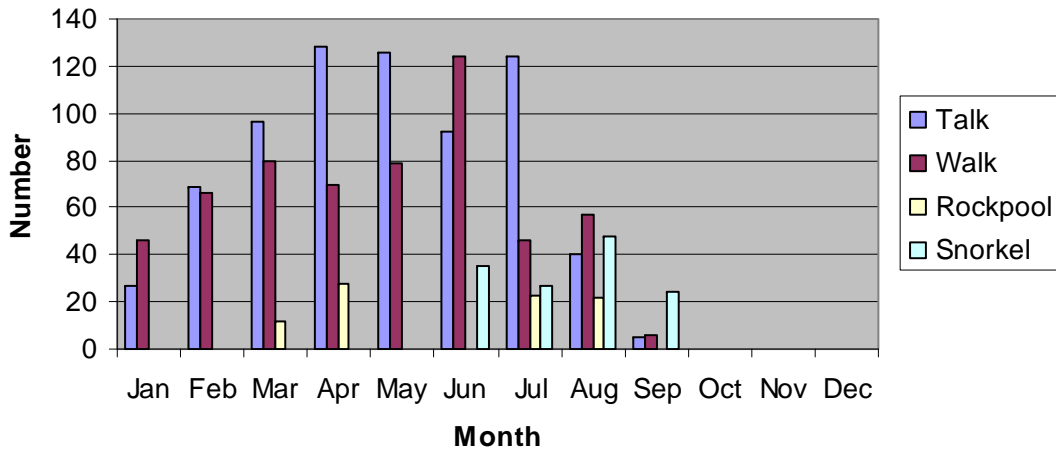
The No Take Zone stretches north to East 51 12.04N, south to East 51 10.07N and east from Lundy's shores to Long 004 39.00W. ^b Licence from English Heritage

Interpretation

- Weekly Talks & Walks throughout the year
- Rockpool Rambles & Snorkel Safari's



Event Attendance 2007



Education

- Mainland visits
- Education Days
- School visits
- College Groups




Media

- Monthly Letter from Lundy
- BBC & ITV
 - Natures Calendar
 - The One Show
 - Turning the tide
 - Spring Watch
 - BBC & ITV News reports
 - Vic Reeves Pirates
- Local Radio

JUNE 06 (July 5th)

WEBSITE: www.northdevongazette.co.uk



Letter From Lundy

JUNE was a busy month around the island for marine sightings. Dolphins are on the increase with pods of between 12 to 50 individuals, seen throughout the



Islands | Lundy Island



Rising 400 feet out of the sea at the point where the Bristol Channel meets the Atlantic is Lundy Island, an outcrop of granite about three and a half miles long where some of Devon's most varied wildlife lives.

[► More about Lundy Island](#)

we had our first basking shark sighting of [unclear] followed by another on June 19 and again on [unclear]

In Summary

- **Lundy Management Works**
 - **Through Partnership**
 - **Communications**
 - **Liaising with stakeholders**
 - **Integrated management**
 - **Research - Increased knowledge & understanding**
 - **Raising awareness**
 - **Interpretation & education**
 - **Media**
 - **On island staff to support the day to day management**

We'll See you at the Market Place – stand #

Useful Websites

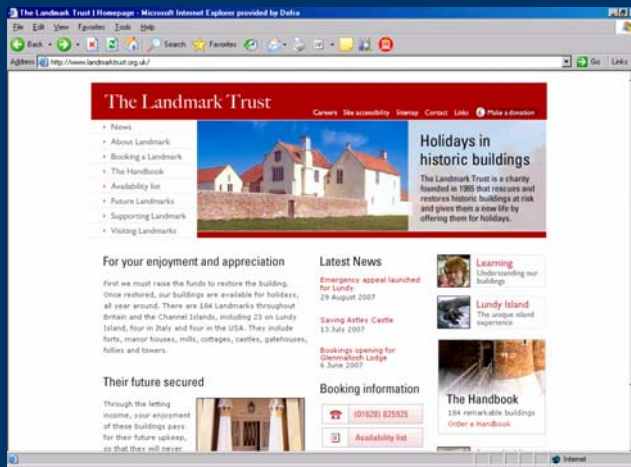
http://www.english-nature.org.uk/virtualtours/Lundy/Lundy_Home.htm



www.lundyisland.co.uk



<http://www.landmarktrust.org.uk/>



<http://www.lundy.org.uk/index.html>

